



## LOWCOST GASTRANSMITTER

# LCTR 903



ADOS GmbH

Instrumentation and Control

P.O. Box 500 444 · 52088 Aachen · FRG

Trierer Strasse 23 – 25 · 52078 Aachen · FRG

Tel: +49 (0) 241 / 9769 - 0

Fax: +49 (0) 241 / 9769 - 16

info@ados.de

www.ados.de



## Application

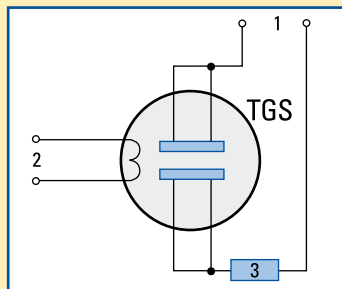
The gas transmitter ADOS LCTR 903 is suitable for the detection of combustible gases, for example hydrogen, methane (natural gas) or propane/butane (LPG) in air in the LEL region.

## Fields of Application

- Gas fired boiler systems
- Gas distribution station
- Gas transfer station
- Battery-charging station

## The TGS sensor

The TGS sensor contains a semiconductor sensor, which is constructed on SnO<sub>2</sub>-sintered N-substrate. When combustible or reducing gases are absorbed by the surface of the sensor, the concentration of the test gas is determined by the change in conductivity.

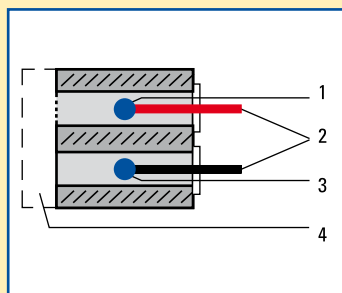


- 1 = Circuit voltage
- 2 = Heating voltage
- 3 = Load resistor

## The VQ sensor

The head of the VQ sensor functions on the principle of heat reaction. When combustible or reducing gases or vapours come in contact with the measuring element, they are subjected to catalytic combustion, which causes a rise in temperature; this rise causes a change in the resistance of the measuring element which is used as a measure of the component of gas being tested.

The inert element is for compensating the temperature and conductivity of the test gas.



- 1 = Catalyzer pellistor
- 2 = Electric connections
- 3 = Inert pellistor
- 4 = Diffusion filter

## Technical Data

Type	TGS	VQ
Measurement method:	Semiconductor	Heat reduction
Measurement range:	0–100 % LEL	0–100 % LEL
Percentage error of f.s.d.:	± 5%	± 5%
Linearity:	<15 % of f.s.d.	<3% of f.s.d.
Temperature range:	+4 °F to +113 °F	+4 °F to +113 °F
Temperature effect:	5%	2%
Response time (t <sub>90</sub> ):	approx. 20 sec.	approx. 20 sec.
Pressure effect:	1%	1%
Mounting position:	optional	optional
Application:	Poisonous, combustible and explosive gases in the LEL region	Poisonous, combustible and explosive gases in the LEL region
Expected operation time for sensor:	> 2 years	> 2 years
Supply voltage:	15 V – 30 V	15 V – 30 V
Interface:	4–20 mA three-wire	4–20 mA three-wire
Protection class:	IP 30	IP 30
Dimensions: (D x H)	3.15 x 3.15 inch	3.15 x 3.15 inch
Weight:	1.1 lbs	1.1 lbs