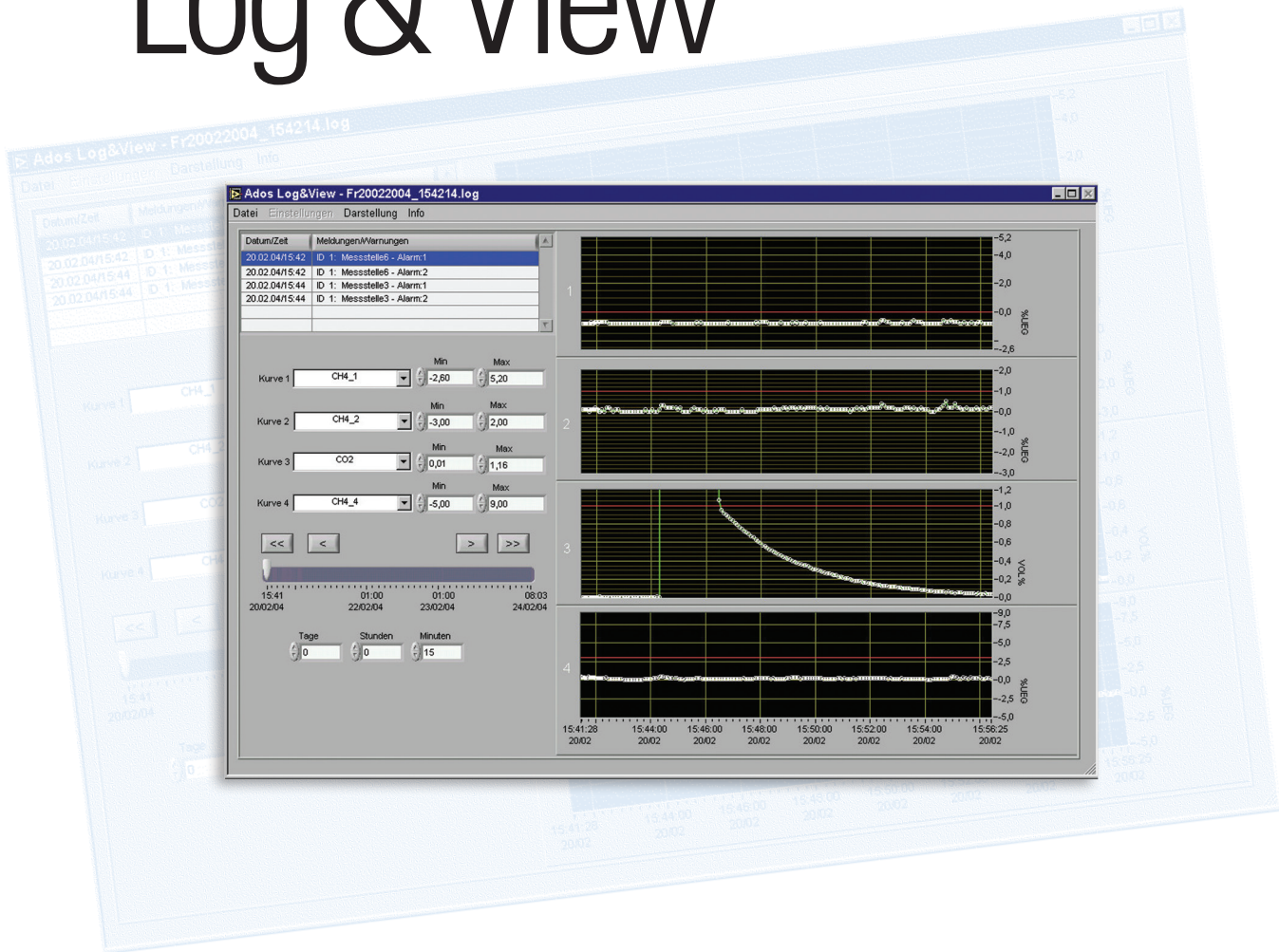




DATA LOGGING SOFTWARE

Log & View



ADOS GmbH

Instrumentation and Control

P.O. Box 500 444 · 52088 Aachen · FRG

Trierer Strasse 23 – 25 · 52078 Aachen · FRG

Tel: +49 (0) 2 41 / 97 69 - 0

Fax: +49 (0) 2 41 / 97 69 - 16

info@ados.de

www.ados.de



Application

ADOS Log & View is suitable for recording, observation and printing, the measured values and events that occur with ADOS gas warning and monitoring equipment MWS 903.

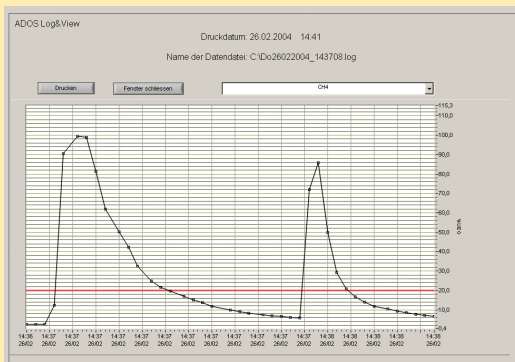
System Requirements

Interfaces: 1 or more, RS 232 or USB-RS 232
 Operating system: Windows 98, 2000, XP, 7
 RAM: 64 MB minimum
 Processor: PII-266 MHz or higher
 Display: 1024 x 768 pixels (min.)
 Harddisk: at least 5 MB free

Functions

- On-line recording or call-up of more than 1000 measured values (1 sensor) saved in memory
- Starting a measurement from the PC
- Reading and setting the equipment time
- Reading and setting the interval time
- Export of data in the .csv format
- Save, export and print of equipment messages including alarm messages
- Data logging of upto 99 devices
- Printout of charts
- Scaling on chart axes can be set manually or fully automatic scaling can be applied
- Languages available: English, German and French
- Readout of equipment parameters
- Straightforward, easy handling of data, irrespective of the quantity of data
- Recognition of connection errors or equipment failure

Chart Printout



Read-out of Equipment Parameters

Gerät	Kanal	Bezeichnung	Einheit	Aufzeichnen
1	1	CH4	%LEG	Ja
1	2	CH4	%LEG	Ja
1	3	CO2	%VOL%	Ja
1	4	CH4	%LEG	Ja
1	5	CH4	%LEG	Ja
1	6	CH4	%LEG	Ja